



Wondermole

Wondermole User Manual Of Image Burning and Installation

PREPARATIONS: At least a 8G+ U disk or hard drive needed for image burning

1. Image Download and Burning Tools

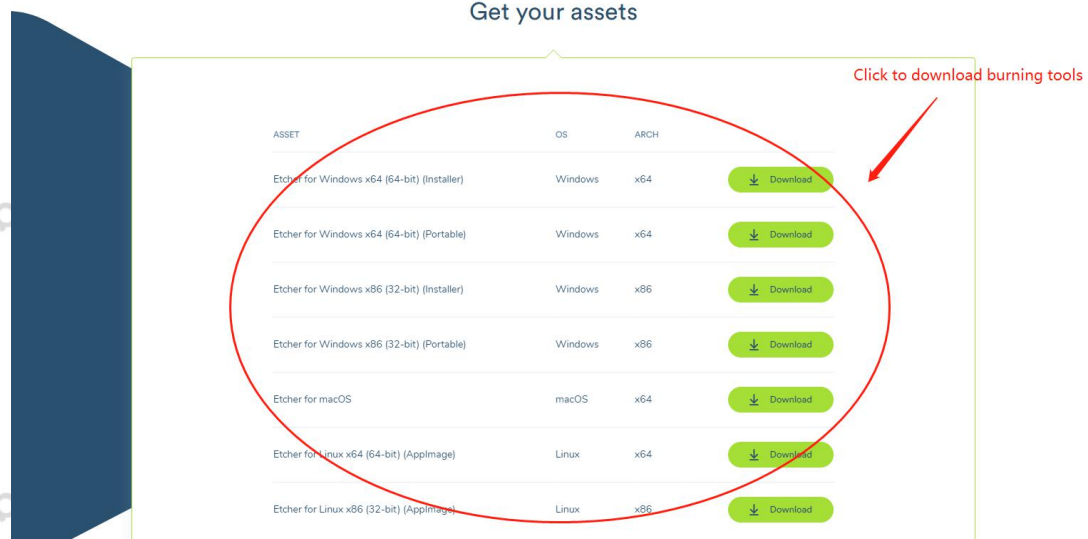
1.1 Image files(To take Wondermole 1.0.0 for example) download link: <https://wondermole.io/>

1.1.1 When the download is complete, unzip the package wondermole-os-1.0.0.rar



1.1.2 Access image files wondermole-os-1.0.0.img

1.2 Download Etcher[An image tool], download link: <https://www.balena.io/etcher/> ; Please select appropriate version according to the number of system bits before download. Etcher currently supports Windows, Mac, Linux.

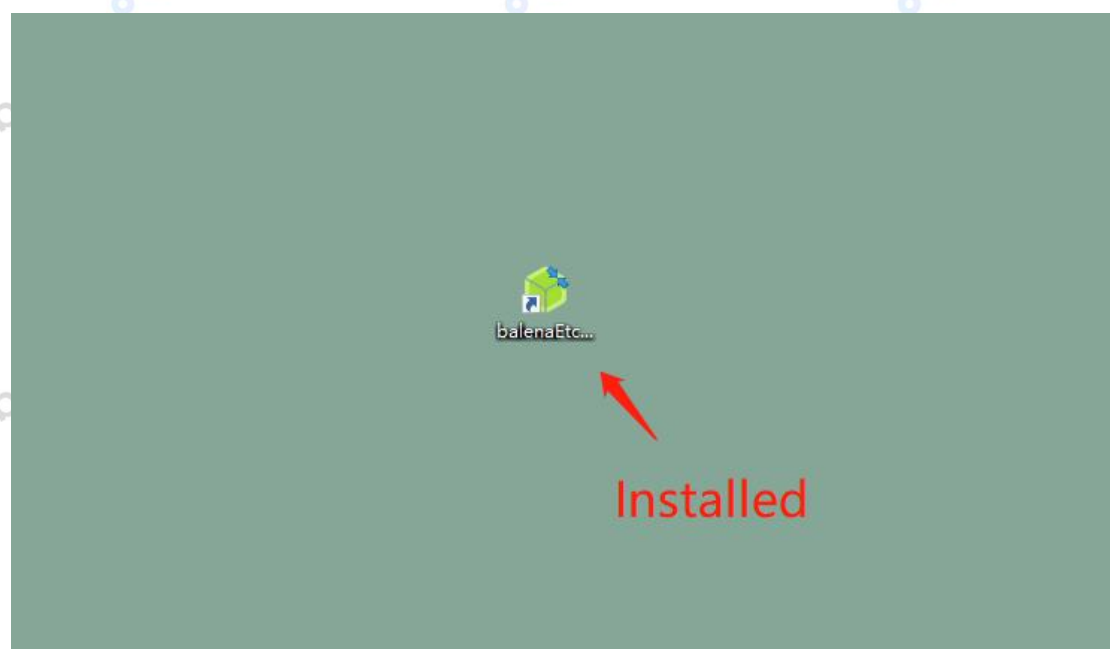


1.3 Install Etcher(To take version 1.4.4 under 64-bit Windows for example)

1.3.1 Click Etcher-Setup-1.4.4-exe to install

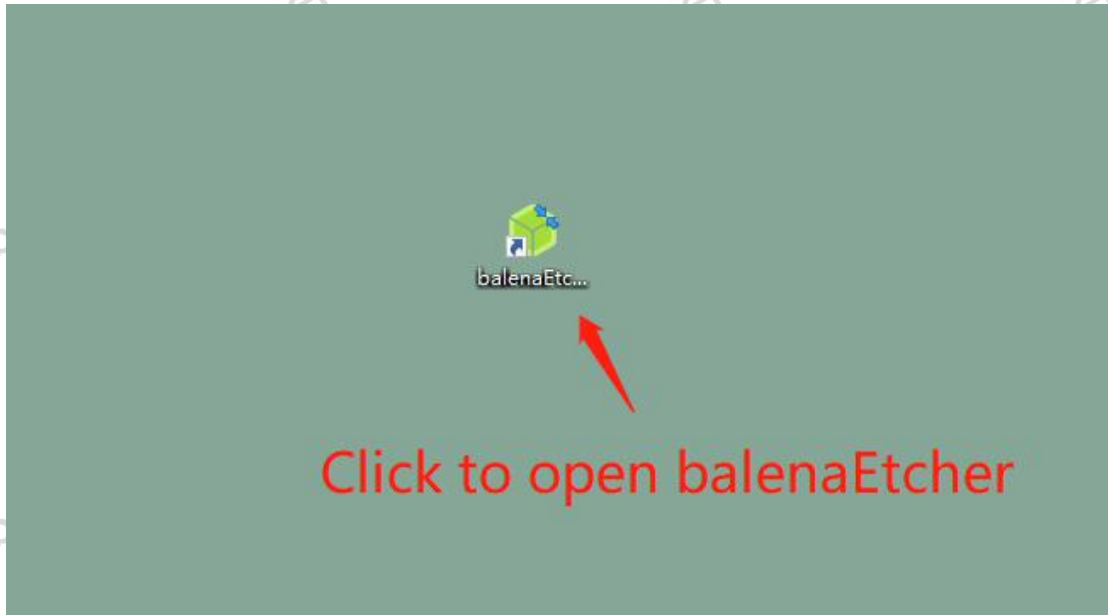
1.3.2 Click Accept to install

1.3.3 When the installation is complete, an Etcher icon would show on the desktop



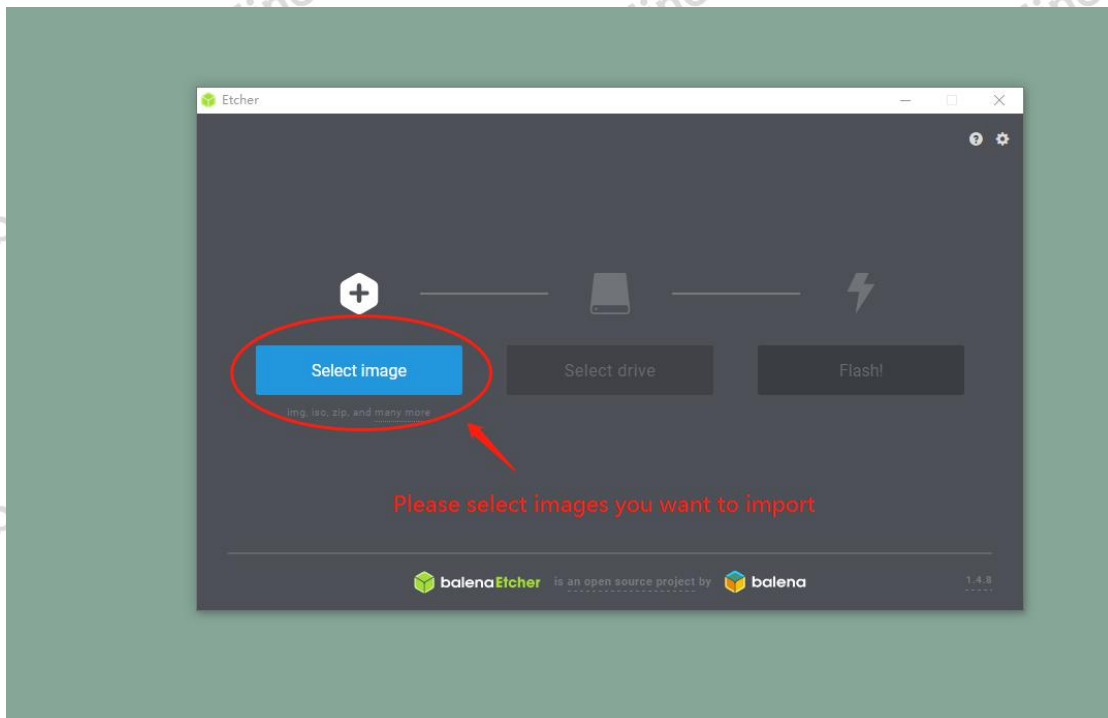
2. Mirroring

2.1 Open Etcher



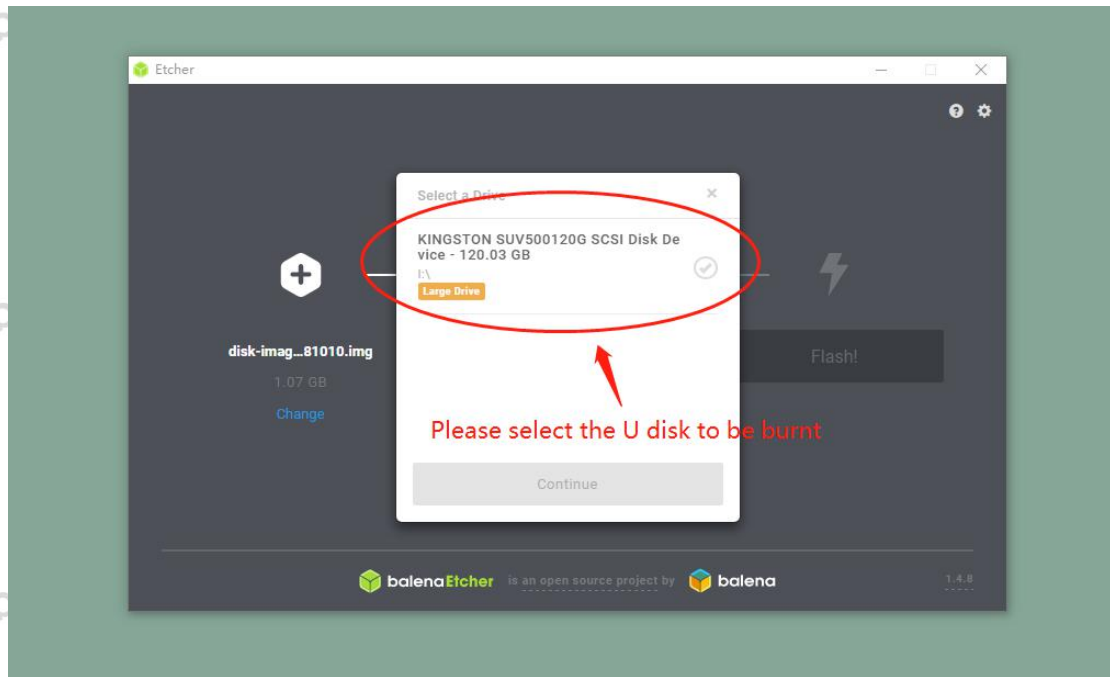
2.2 Import Image Files

2.2.1 Click Select Image and choose image file to be imported

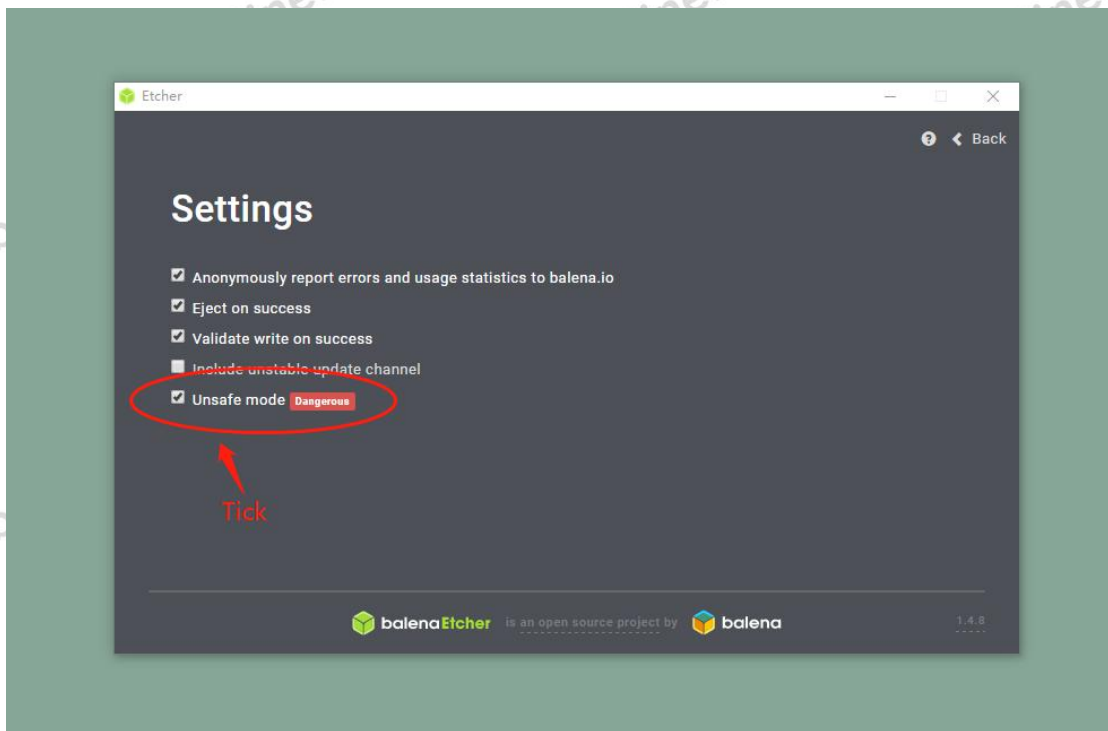
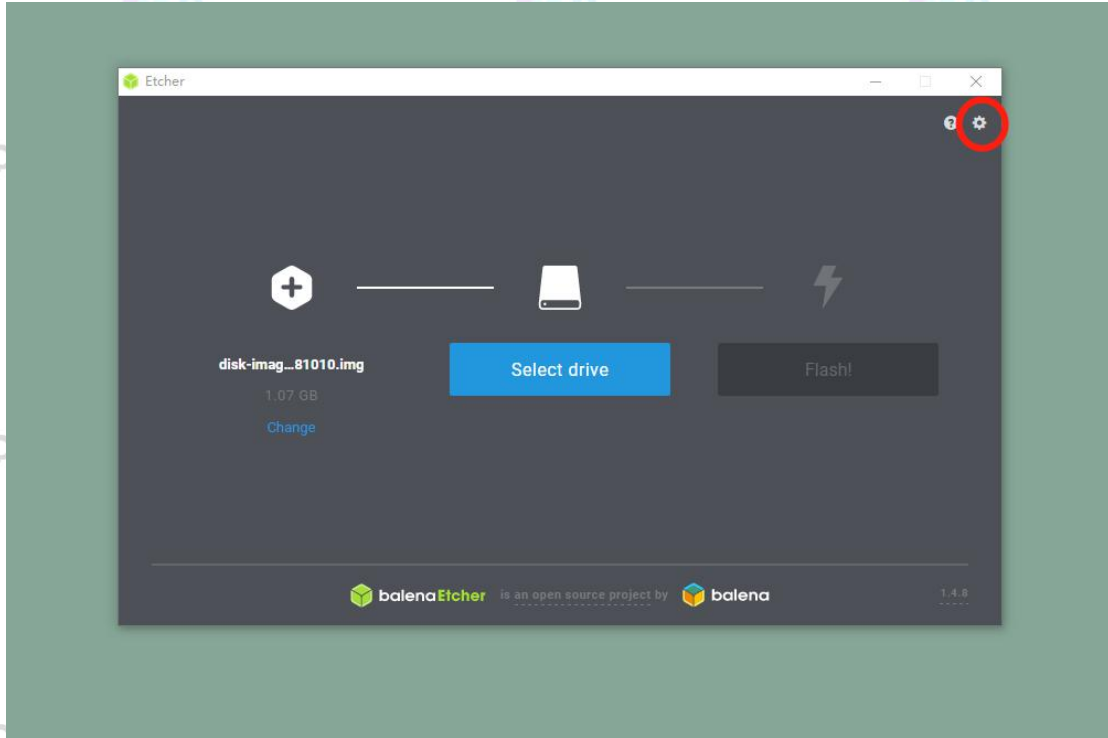


2.3 Choose your devices

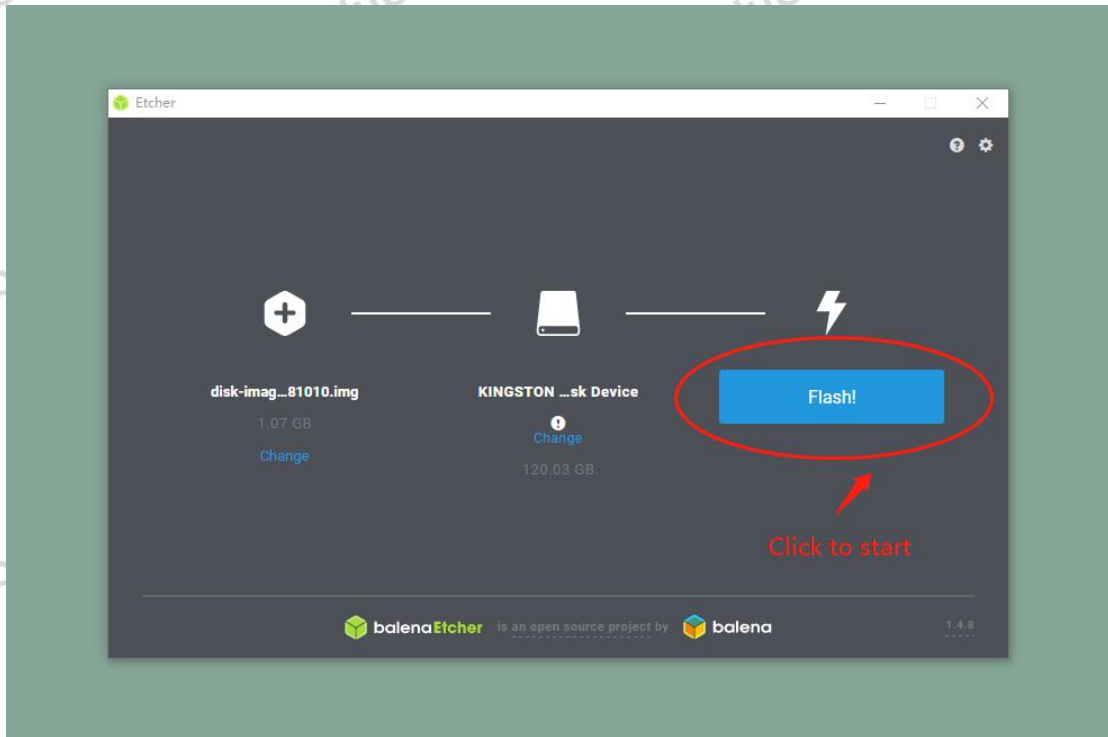
2.3.1 This software will by default select the U disk or hard drive that has been inserted to the computer. If there are multiple devices, please select them manually.(To take 32G U-disk for example)



2.3.2 Please note that the hard drive connected to the computer may not appear in the first place. You have to click the Setting icon on the upper right and tick Unsafe mode, then click Select drive to see the hard drive needs to be burnt.



2.4 Click Flash! and wait



2.5 Please wait until the image burning is done

Wondermole Team last edited on April 22, 2019.